

United States Patent [19]

[11] Patent Number: **4,656,635**

Baer et al.

[45] Date of Patent: **Apr. 7, 1987**

[54] **LASER DIODE PUMPED SOLID STATE LASER**

[75] Inventors: **Thomas M. Baer, Mountain View; Mark S. Keirstead, San Jose, both of Calif.**

[73] Assignee: **Spectra-Physics, Inc., San Jose, Calif.**

[21] Appl. No.: **811,546**

[22] Filed: **Dec. 19, 1985**

Related U.S. Application Data

[63] Continuation-in-part of Ser. No. 730,002, May 1, 1985.

[51] Int. Cl.⁴ **H01S 3/10**

[52] U.S. Cl. **372/27; 372/22; 372/108; 372/9; 372/34; 372/21; 372/71**

[58] Field of Search **372/69, 30, 21, 41, 372/27, 71, 9, 108, 22, 26, 75**

[56] References Cited

U.S. PATENT DOCUMENTS

3,982,201	9/1976	Rosenkrantz	372/75
4,272,733	6/1981	Walling et al.	372/41
4,553,238	11/1985	Shaw et al.	372/66

OTHER PUBLICATIONS

Farmer et al., "Solid State Pumping Source for

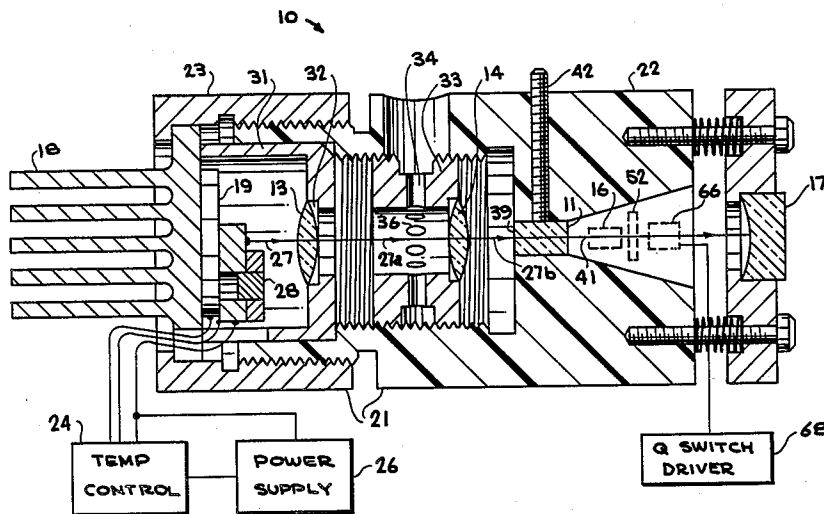
Nd:YAG Lasers with Integrated Focusing Optics", IBM Tech. Disc. Bull., vol. 15, No. 1, Jun. 1972.
Chinn, Intracavity Second-Harmonic Generation in a Nd-Pentaphosphate Laser" Appl. Phys Lett. vol. 29, (1976), p. 176.

Primary Examiner—Leon Scott, Jr.
Attorney, Agent, or Firm—Paul Davis

[57] ABSTRACT

A neodymium or other rare earth doped solid state laser is pumped by a matched high efficiency laser diode, resulting in a compact, high efficiency and long lifetime laser assembly. Output is in the near infrared range, but can be converted to the visible spectrum by an intracavity frequency doubler. A doubling crystal, which may be a KTP crystal, is placed at an optimum location in the laser cavity. Polarization of the beam may be achieved simply by stressing a non-birefringent rod, prior to frequency doubling, or by using a birefringent material such as Nd:YLF for the rod. An amplitude noise suppression etalon may also be placed at an optimum position in the laser cavity; alternatively a ring cavity or pair of quarter wave plates can be used. A folded cavity configuration produces a pair of beam waists in the cavity. Pulsed operation can be produced by means of a Q-switch.

17 Claims, 9 Drawing Figures



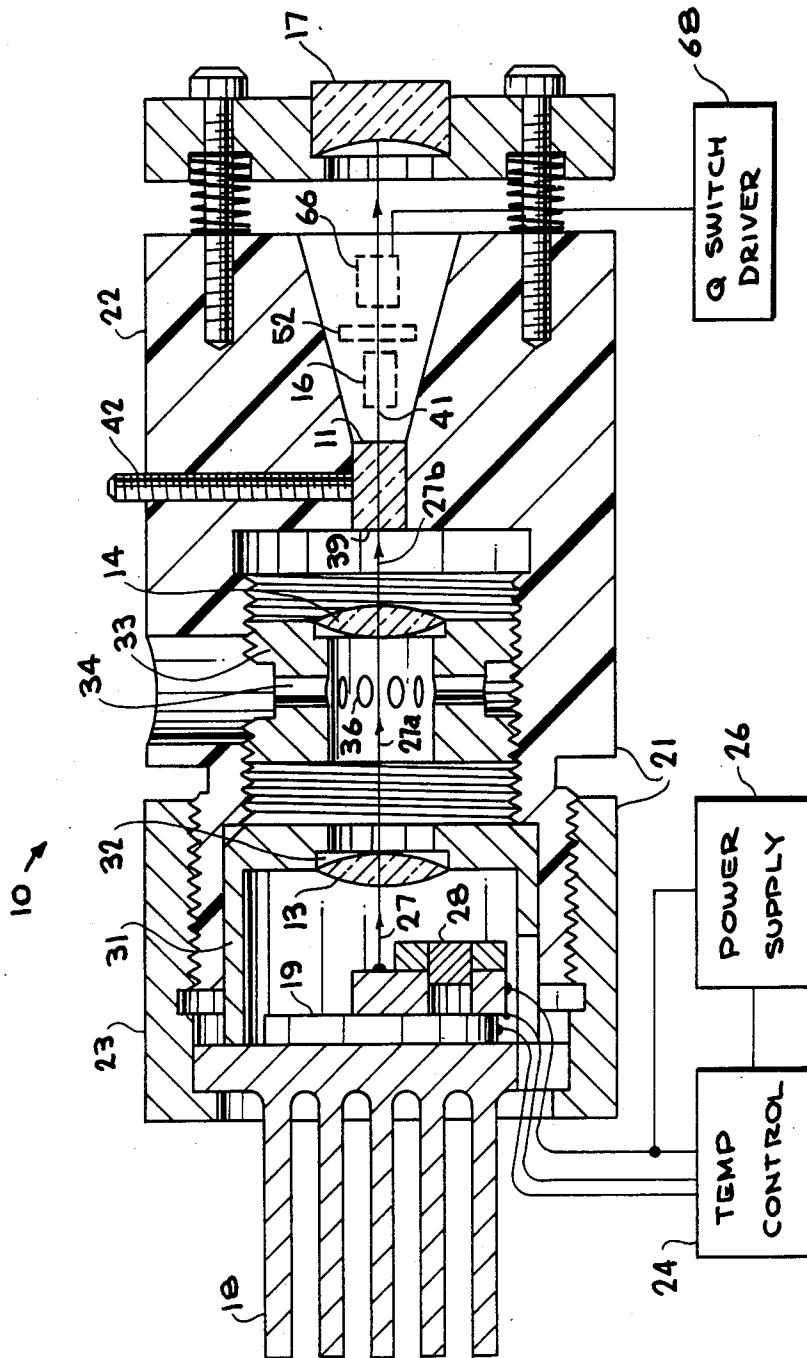


FIG. 1

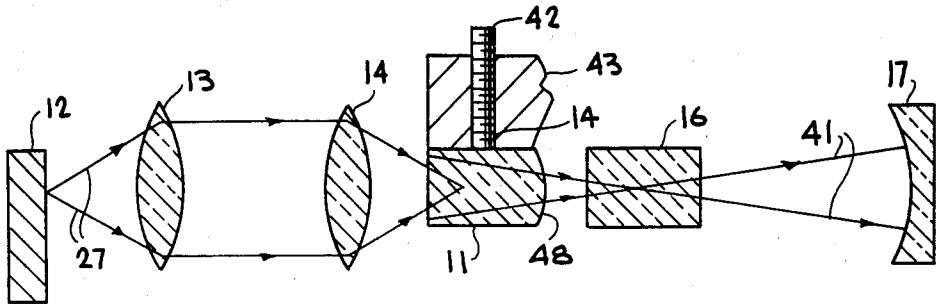


FIG. 2A

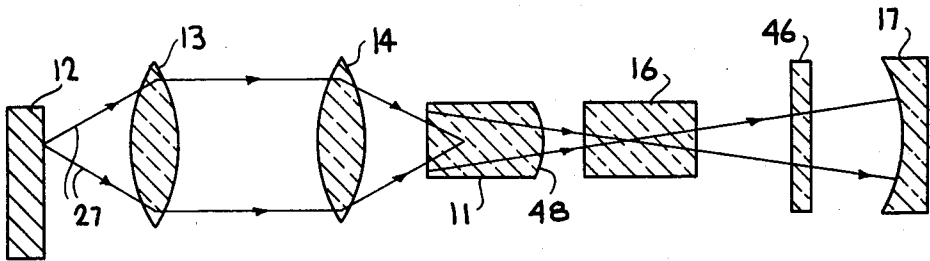


FIG. 2B

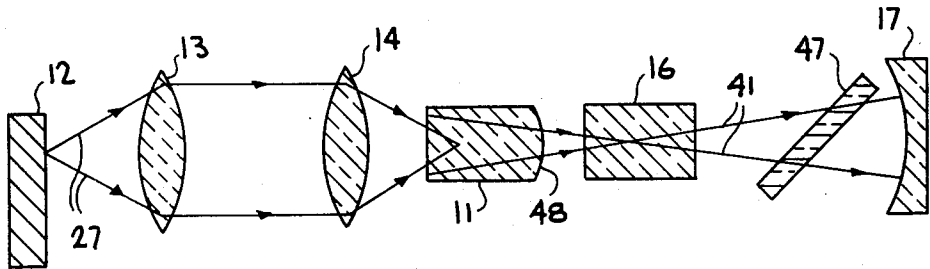


FIG. 2C

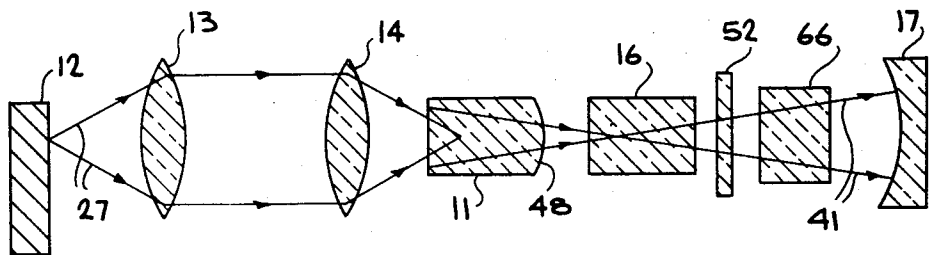


FIG. 2D

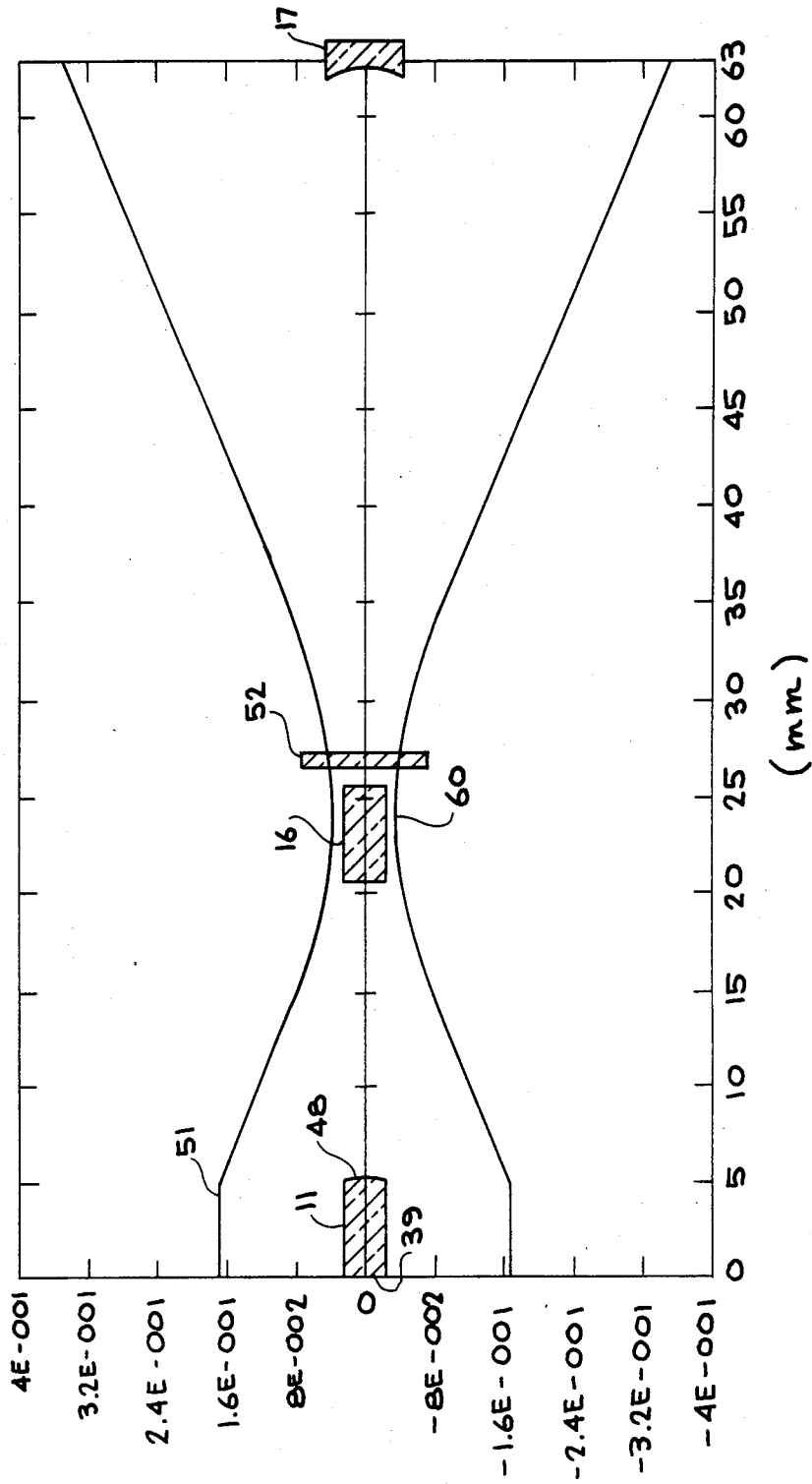


FIG. 3

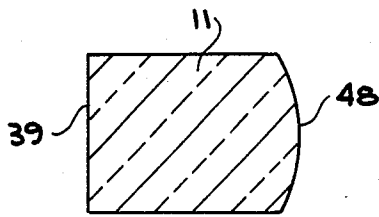


FIG. 4

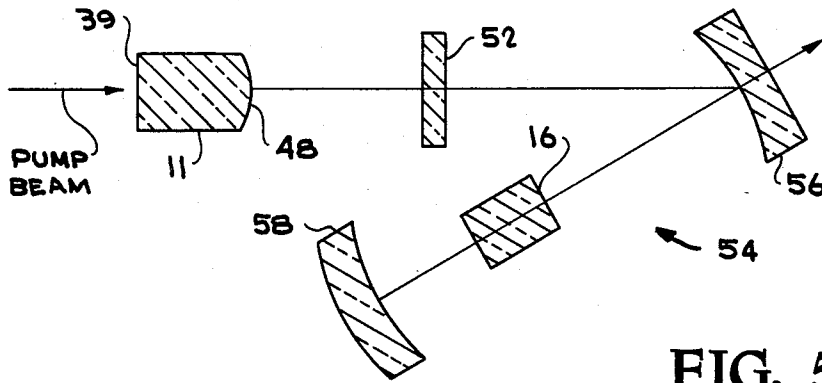


FIG. 5

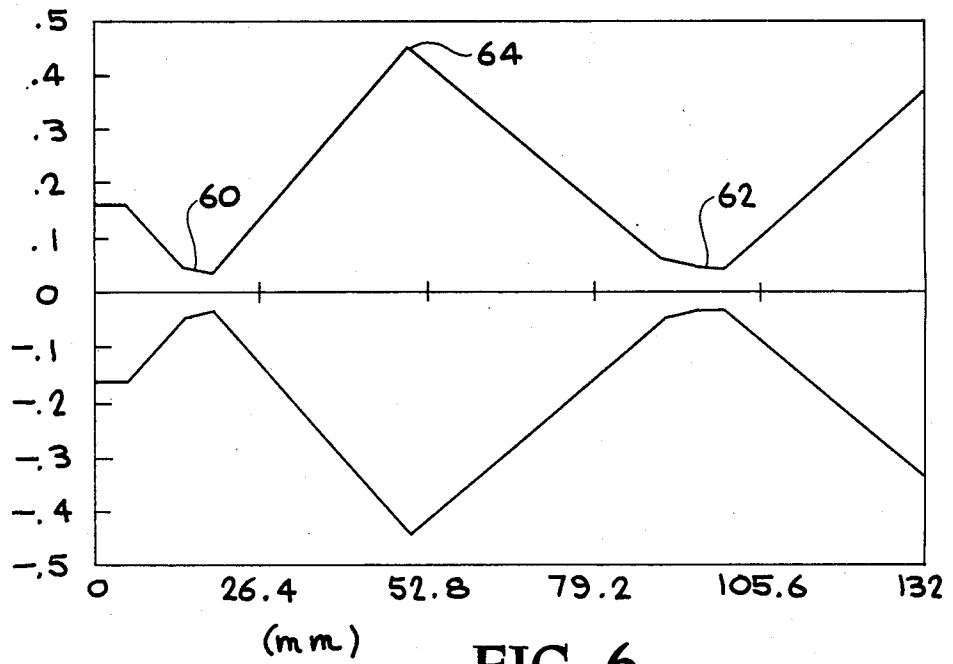


FIG. 6

LASER DIODE PUMPED SOLID STATE LASER

RELATED APPLICATIONS

This application is a continuation-in-part (CIP) of application Ser. No. 730,002 filed May 1, 1985.

BACKGROUND OF THE INVENTION

This invention relates generally to lasers, and more particularly to solid state lasers such as Nd:YAG lasers.

A large number of different kinds of solid lasers have been discovered, distinguished from one another by host material, by active lasing ions with which the host is doped, and by output characteristics. Of these, mainly ruby, Nd:YAG and Nd-doped glass laser systems are of major importance in industrial and laboratory environments. They are particularly useful for materials processing applications which include drilling, welding, cutting and scribing.

A wide variety of Nd:YAG lasers and industrial systems are currently manufactured. Their usefulness and versatility is due in part to the fact that they can be operated in a number of different modes.

However, Nd:YAG lasers have proved to be relatively inefficient and have relatively short lifetimes due to limitations of their pumping sources which are typically arc or incandescent lamps, or light-emitting diodes.

Pumping by arc or incandescent lamps is undesirable due to limited lifetimes. The lamps themselves have lifetimes of a few hundred hours and need periodic replacement. Moreover, they generate unnecessary and damaging ultraviolet radiation which tends to degrade the YAG material itself.

Pumping by light-emitting diodes is undesirable because of limited power and focusability and low efficiency. The wavelength of the emitted light is very broad and does not match the Nd:YAG absorption line. Additionally, light-emitting diodes have a broad emission spectrum which provides inherent limitations when they are utilized as pumping sources for Nd:YAG lasers.

Exemplary Nd:YAG lasers pumped by these sources are disclosed by: F. W. Ostermayer, Jr., *Appl. Phys. Lett.*, Vol. 18, No. 3 (1971) p. 93; N. P. Barnes, *J. Appl. Physics*, Vol. 44, No. 1 (1973) p. 230; R. B. Chesler and D. A. Draeger, *Appl. Phys. Lett.*, Vol. 23, No. 5 (1973) p. 235; R. B. Allen and S. J. Scalise, *Appl. Phys. Lett.*, Vol. 14, No. 6 (1969) p. 188; and W. Culshaw, J. Kanneland and J. E. Peterson, *J. Quant. Elect.*, Vol. QE-10, No. 2 (1974) p. 253.

However, there exists a need for a more efficient, longer life Nd:YAG laser for low to high power applications. A need also exists for a frequency-doubled Nd:YAG laser which has a long life-time, is efficient and suitable for applications in the visible light range as well as other wavelengths. There is also a need for a laser with low amplitude noise. A need further exists for a laser with a pulsed output. It would also be desirable to produce a family of lasers using other neodymium-doped or other rare earth doped solid state materials in addition to Nd:YAG (hereafter referred generally to as RE:solid).

SUMMARY OF THE INVENTION

Accordingly, an object of the present invention is to provide an intra-cavity frequency doubled RE:solid state laser having high efficiency and a long lifetime.

Another object of the invention is to provide an intra-cavity frequency doubled RE:solid laser which is compact.

Yet another object of the invention is to provide a laser diode pumped intra-cavity frequency doubled RE:solid laser having high efficiency, a long lifetime and which is relatively compact.

Another object of the invention is to provide a RE:solid laser having low amplitude noise.

A further object of the invention is to provide a RE:solid laser having a pulsed output.

Another object of the invention is to provide a laser diode pumped RE:solid laser with high efficiency, long lifetime, and relatively compact design, which is not frequency doubled.

A further object of the invention is to provide a cavity design for a RE:solid laser which allows efficient pumping by a high power laser diode array and provides efficient intra-cavity frequency doubling to the visible.

Yet another object of the invention is to provide a means for controlling the polarization of the RE:solid laser to allow efficient intra-cavity frequency doubling.

Still another object of the invention is to provide a means of controlling the frequency of a laser diode pump source utilized with a RE:solid laser.

Another object is to provide efficient methods for producing RE:solid laser beams both in the visible spectrum and the near-infrared range, with a RE:solid rod pumped by a laser diode array.

These and other objects of the present invention are achieved by providing a high efficiency, laser diode pumped, compact RE:solid laser which comprises a RE:solid laser rod having a front end and a back end; a housing with means for holding the laser rod in a fixed position therein with its front end forward; a laser diode or diode array for pumping the laser rod, having an output frequency sufficiently matched to the rod to pump the rod, and secured in the housing behind and in alignment with the rod; an output coupler means including a mirrored surface for a front end of a laser cavity and a rear mirror means for a back end of a laser cavity, with the rod positioned within the cavity. A frequency doubler is positioned within the laser cavity to receive a suitably polarized output beam of the laser rod to halve its wavelength and double its frequency; if necessary polarization means are included in the cavity for polarizing the laser beam in order to facilitate efficient frequency doubling. In addition to Nd:YAG, other preferred materials for the rod include Nd:YLF, Nd:YAP and Nd:YALO.

In preferred embodiments, particular features of the laser diode array pumped system of the invention are included for highly efficient and compact construction, as well as efficiency in laser pumping, frequency doubling and polarization of the beam, suppression of amplitude noise, and pulsed output operation.

The present invention provides an intra-cavity frequency doubled RE:solid laser which allows efficient pumping by a high power laser diode array. The present invention also provides an expansion of the lasing volume to match the focussed image of a laser diode array. An intra-cavity waist is disclosed which provides effi-

cient frequency doubling. In a preferred folded cavity configuration, a pair of intra-cavity waists are provided.

Laser diode arrays provide a great deal of power despite the limited focusability of the output beam. With multi-strip arrays, e.g. having ten emitters in a row, each having an elliptical beam configuration, the compilation of the emitted beams adds up to a rectangular geometrical beam which possesses too much spatial structure. Advantageously, the present invention overcomes this disadvantage by providing a cavity designed to expand the lasing volume to match the focussed image of the laser diode arrays and therefore, their high power efficiency can be utilized despite their poor focusing qualities.

The invention is also advantageous in some applications without frequency doubling, yielding an efficient near infrared laser beam from low to high power.

In methods according to the invention a RE:solid laser rod is pumped by a laser diode to produce an output in the near infrared range which may be doubled with intra-cavity frequency doubling to produce a visible beam. Polarization of the beam is performed by the laser rod itself or else intra-cavity for efficient frequency doubling.

Amplitude noise is suppressed by means of an etalon placed in the cavity, or alternatively by a ring cavity configuration, or a pair of quarter wave plates. Pulsed operation is obtained using a Q-switch.

Other and further objects of the present invention will be apparent from the following description and claims and are illustrated in the accompanying drawings which, by way of illustration, show preferred embodiments of the present invention and the principles thereof and what are now considered to be the best modes contemplated for applying these principles. Other embodiments of the invention embodying the same or equivalent principles may be used and structural changes may be made as desired by those skilled in the art without departing from the present invention and the purview of the appended claims.

DESCRIPTION OF THE DRAWINGS

FIG. 1 is a sectional longitudinal view of a laser diode pumped solid state laser assembly according to the invention, including a laser rod, laser diode, laser cavity, housing, cooling device and other associated components, and showing (in dotted lines) the additional features of a frequency doubler, noise suppression etalon, and Q-switch.

FIGS. 2A, B, C are schematic sectional views of the system with various alternate means for polarizing the laser beam.

FIG. 2D is a schematic sectional view showing a system with etalon and Q-switch.

FIG. 3 is a graphic representation of the laser beam shape within the laser cavity, with a beam waist formed between the laser rod and an output coupler at the front end of the assembly, also showing the position of the optical elements (not to scale).

FIG. 4 is an enlarged sectional view of the laser rod of the laser system, to indicate special surfaces of the rod.

FIG. 5 is a schematic sectional view, in longitudinal orientation, of a folded cavity configuration.

FIG. 6 is a graphic representation of the laser beam shape within the folded cavity, with a pair of beam waists.

DESCRIPTION OF THE PREFERRED EMBODIMENTS

In the drawings, FIG. 1 shows a neodymium-YAG laser assembly 10 in a longitudinal sectional view. The major components of the laser 10 are a neodymium-YAG laser rod 11 and a laser diode 12 toward the rear of the assembly. The assembly includes lenses 13 and 14 through which the laser diode beam passes en route to the laser rod 11, a frequency doubler 16 (dashed lines) at the output side of the laser rod, an output coupler 17 (which comprises the front surface of a mirror) at the front end of the assembly, a heat sink 18 at the rear of the assembly, a Peltier cooler 19 between the diode 12 and the heat sink 18, and a housing 21, which may comprise front and rear housing components 22 and 23, to which all of these operating components are attached. Also included with the assembly are a temperature control 24 and a power supply 26.

The power supply 26 delivers electrical power to the laser diode 12, causing it to emit a laser diode beam 27 and creating some waste heat which is removed by the Peltier cooler 19 and the heat sink 18. The temperature control 24 is shown connected to the Peltier cooler 19 to regulate the temperature of the diode and to tune it by temperature to the correct wavelength for pumping of the Nd-YAG laser rod 11. The laser diode 12, which may be a Gallium aluminum arsenide (GaAlAs) laser diode array, as identified as Model No. 2410 manufactured by Spectra Diode Labs of 3333 North First Street, San Jose, California, is manufactured to be close to the proper wavelength for excitation of the Nd-YAG rod, but temperature control is required for precise "tuning" of the diode's output beam 27. In one preferred embodiment, the laser diode array 12 emits a beam substantially at 0.808 micron wavelength, the proper wavelength for pumping of the Nd-YAG rod 11. Such a laser diode has an efficiency of about 20%.

As indicated somewhat schematically in the drawing, the diode 12 may be retained in the housing by a diode clamp 28.

A fixed lens mount 31 is secured in a portion of the housing, which may be a rearward end flange 32 of the forward housing component 22, and retains the lens 13 in fixed position therein. The fixed lens 13 acts as a collimating lens to convert the diverging beam 27 from the laser diode array 12 into substantially a parallel beam.

The collimated laser diode beam 27a then passes through the lens 14, which is a focusing lens, for focusing the beam into the back end of the Nd-YAG crystal 11. As indicated, the focusing lens 14 is adjustable, mounted on an adjustable lens spool 33 which is rotatable within a threaded bore as shown, to adjust the fore and aft position of the lens 14. An opening 34 preferably is provided in the forward housing component 22 for access to the adjustable lens spool 33 to rotate it via a series of holes 36 in the lens spool.

The focused, converging laser diode beam 27b enters the Nd-YAG laser rod 11 and excites the neodymium atoms in the rod to produce a laser beam in the near infrared range.

A laser cavity for the Nd-YAG laser rod is defined between the output coupler 17, which comprises a partially mirrored surface, and an opposing rear mirror located somewhere to the rear of the Nd-YAG rod 11. In one embodiment of the invention, the rear surface 39 of the laser rod 11 itself is coated to be highly reflective

at 1.06 micron, serving as the rear mirror of the laser cavity. This is also indicated in FIG. 4, showing the Nd-YAG rod 11 in enlarged view. It should be noted that the term "mirrored" as used herein and in the appended claims, includes partially mirrored.

Forward of the Nd-YAG laser rod 11 is the intracavity frequency doubler 16 which preferably, but not necessarily, is included in the assembly 10. The emerging laser beam 41 from the Nd-YAG laser rod 11 passes through the frequency doubler 16 where its wavelength is halved, doubling its frequency. Preferably, the frequency doubler 16 is a crystal which is a near-ideal frequency doubling element for this purpose, selected from a group including KTP, LiNbO₃ and LiIO₃. A KTP crystal is a suitable and preferred frequency doubler, being an efficient doubling element in the wavelengths concerned with this invention. The power output of the KTP crystal frequency doubler increase approximately quadratically with increases in the 1.06 micron laser beam power, so that the efficiency of a system utilizing this frequency doubler is much greater at high powers than at low powers.

The laser beam should be polarized within the laser cavity for maximizing efficiency in frequency doubling. The intra-cavity frequency doubler 16 only converts incident light polarized along a certain axis. Unpolarized light will pass through doubler 16 along an orthogonal axis and not be frequency converted. Therefore the incident laser beam should be polarized to coincide with the axis of doubler 16. This can be accomplished in several different ways.

One preferred method according to the present invention is to simply apply a transverse stress to the Nd:YAG rod 11, which has the effect of creating a beam polarization which is along the axis of the stress. The axis of the stress and resulting beam polarization should be oriented relative to the conversion axis of doubler 16 to maximize conversion.

According to the present invention, the transverse stressing of the laser rod 11 may be accomplished by a simple set screw of stressing screw 42 threaded into the housing component 22 as shown. Since it is important that the transverse stress on the laser rod be substantially constant, it may be beneficial to add a strong compression spring to the assembly including the set screw 42, for example a Belleville washer, between the set screw and the laser rod 11. Although this is not shown in FIG. 1, a schematic indication of a Belleville washer 43 contacted by the set screw 42 is included in FIG. 2A, with the force of the Belleville washer 43 applied to the side of the Nd-YAG rod 11 by a spacer member 44.

FIGS. 2A, 2B and 2C show schematically the major components of the laser diode and Nd-YAG laser assembly, and indicate three different systems for establishing a polarization in the laser beam 41. In FIG. 2A, as discussed above, the transverse stressing of the Nd-YAG rod itself is illustrated. FIG. 2B shows an alternative method wherein a quarter waveplate 46 is used, between the frequency doubler 16 and the front end mirrored surface 17. FIG. 2C shows the use of a Brewster plate 47, i.e. a piece of glass oriented at Brewster's angle. It is important to control the polarization within the laser cavity.

Another important feature of the invention relates to beam shaping in the laser cavity. As indicated in FIGS. 1 and 2A through 2C, the partially mirrored surface 17 at the output coupler preferably is concave. It is also

indicated in these figures and in FIG. 4 that the front end surface 48 of the Nd-YAG laser rod 11 may be convexly curved. The curvature of the front of the Nd-YAG rod, which may be a spherical curvature of about 15 millimeters radius, in effect puts a lens in the laser cavity which tends to focus the radiation. Cooperating with this lens in the shaping of the beam within the cavity is the output coupler mirror 17.

The graph of FIG. 3 shows generally the laser beam 41 in profile within the laser cavity. It illustrates beam shaping to form a beam waist 50, that is, a narrowed portion of the laser beam as it resonates within the laser cavity between the two mirrored surfaces. In the representation of FIG. 3, the rear mirrored surface is assumed to be the flat back surface 39 of the Nd-YAG laser rod.

Varying of the radius of curvature of the lens surface 48 at the front of the laser rod has been found to affect the size of the beam waist 50. A tighter radius of curvature will produce a smaller waist which enhances the frequency doubling process. It has been found advantageous for efficiency of the laser, according to the present invention, to reduce the beam waist 50 to the minimum diameter practicable relative to other design considerations, including permissible ranges of radius at the front end 48 of the laser rod, and to place the KTP frequency doubling crystal at the beam waist. A minimum practicable waist diameter may be about 40 microns for the embodiment shown.

Another aspect of beam shaping according to the present invention relates to matching of beam volume of the resonating beam inside the YAG rod to the size of the laser diode beam exciting the YAG crystal. The combination of the concave output coupler mirror 17 and the lens-shaped end 48 at the front of the YAG rod, with the back 39 of the rod mirrored, enables the beam size at a location 51 on the graph of FIG. 3, i.e. within the YAG rod, to be adjusted to the appropriate volume. The beam focused from the laser diode into the YAG crystal must overlap the beam volume 51 inside the laser rod, for efficient excitation of the neodymium atoms within the rod. The pumping volume must be generally the same as the lasing volume. If the laser beam volume within the YAG crystal is too small, the pump volume from the laser diode beam does not match it well and this results in a reduction in the laser's efficiency.

The combination of the lens-shaped end 48 on the laser rod, the output coupler mirror 17 and its radius of curvature, the distance back from the lens 48 to the rear cavity mirror 39 (preferably on the flat back end surface of the YAG rod), which preferably is about 5 millimeters, and the placing of the KTP doubling crystal at the beam waist 50, which is of minimum practicable size, results in a highly efficient frequency doubled laser output. The radius of curvature of the concave mirror 17 at the output coupler, in one preferred embodiment of the invention, preferably is about 37 millimeters. The distance between this concave mirror and the forward end of the KTP crystal may be about 31 millimeters. A KTP crystal of about 5 millimeters length may be used. From the rear of the KTP crystal back to the lens-shaped front of the YAG rod may be about 22 millimeters. As stated above, the YAG rod itself may be of about 5 millimeters length, with a 15 millimeter radius of curvature of the front-end lens 48.

It should be understood that the mirror locations shown and described herein are preferred, but may

vary. For example, the rear mirror surface of the laser cavity may comprise a mirror placed somewhere behind the back surface 39 of the Nd-YAG laser rod.

With the laser diode array pumped Nd-YAG laser assembly of the invention, it has been found that for visible low power laser beam output, efficiencies of about 0.5% to 1.0% may be achieved. For example, with about one watt electrical power supplied to the laser diode, which has an efficiency of about 20%, the laser diode output beam will have a power of about 200 milliwatts. In general at these pump levels the 1.06 micron output is approximately 30% of the diode laser output, so that the 1.06 micron output beam has a power of about 60 milliwatts. Thus an efficiency of approximately 5% is achieved for output at 1.06 micron. For efficiency frequency doubling the output coupler is coated to be highly reflective at 1.06 micron and highly transmissive at 0.532 micron. At 200 milliwatts pump levels the intra-cavity 1.06 micron intensity is approximately 10 watts. At this power level the doubling efficiency of the KTP is sufficient to give approximately 10 milliwatts output at 0.532 micron.

At substantially higher power, for example 10 watts of input to the laser diode, a 2-watt output diode beam excites the YAG rod to emit a laser beam of about 600 milliwatts. At this higher power, the frequency doubling crystal is more efficient, and an output in the visible range of about 100 milliwatts can be achieved. Thus, one percent efficiency in a medium-power visible laser is achieved.

At high-power output, the Nd-YAG laser of the invention is considerably more efficient. For example, if 40 watts are input to the laser diode, a laser beam of about 2.4 watts is frequency doubled, and at this power the KTP frequency doubler converts nearly 100 percent of the 1.06 micron output light to the visible. Thus, an output beam of over two watts in the visible range can be achieved, at up to 5% to 6% efficiency.

The system of the invention is also advantageous as producing a laser in the near-infrared range. In this form of the invention, the frequency doubler 16 (in dashed lines in FIG. 1) is eliminated. Thus, the efficiency of the system is limited only by the approximately 20% efficiency of the laser diode, and by the approximately 30% efficiency of the Nd-YAG laser rod itself, for an overall efficiency of nearly 6% regardless of power level.

In one form of such an infrared laser, the ends of the Nd-YAG laser rod may form the two mirrors of the laser cavity. Thus, each end is partially mirrored, defining a cavity within the rod itself. An extremely efficient near-infrared laser thereby results, even more compact than the system shown in FIG. 1, since the output coupler is integrated with the laser rod.

A further problem that occurs in a miniaturized, laser diode pumped, intra-cavity frequency doubled Nd:YAG laser as previously described is the generation of amplitude noise, including large amplitude spikes, which prevent or limit use in applications requiring a highly stable or constant output. Although the short laser cavity results in longitudinal modes which are relatively widely spaced, the gain curve is generally sufficiently broad to permit multiple longitudinal modes to oscillate in the laser cavity. The combination of these multiple modes produces amplitude noise. In order to reduce or eliminate amplitude noise, an amplitude noise suppression etalon 52 is placed in the cavity normal to the beam, as shown in FIGS. 1, 2D, 3. Alternatively, it may be possible to mode lock the laser to reduce noise.

Using etalon 52 causes the laser to operate in single mode which is quiet. An example of an etalon 52 which can be used is an optical flat of about 0.5 mm thickness. Since the beam waist 50 is not only the narrowest portion of the beam but the portion of the beam where all the rays are parallel, it is preferred to place etalon 52 at the beam waist 50 in order to reduce optical losses. Since it is also preferred to place doubler 16 at waist 50, etalon 52 can be placed adjacent doubler 16 as shown in FIG. 3.

To avoid the difficulty of placing two elements, doubler 16 and etalon 52, at beam waist 50, an alternate configuration, folded cavity 54, shown in FIG. 5, is preferred. Folded cavity 54 includes a concave folding mirror 56 which forms with rear mirror surface 39 of laser rod 11 the first arm of the laser cavity, and concave end mirror 58 which forms with folding mirror 56 the second arm of the laser cavity. Folding mirror 56 is a dichroic mirror which is highly reflective at the undoubled frequency and highly transmissive at the doubled frequency, and is used as the output coupling means for the visible light. Mirror 58 is highly reflective at both frequencies. Frequency doubler 16 is placed in the second arm between mirrors 56 and 58 so that the laser beam produced by rod 11, with the proper polarization, is reflected by mirror 56 and passes through doubler 16. The frequency doubled beam is reflected back by mirror 58 to mirror 56 through which the beam is output. The frequency doubled radiation thus does not pass back through the first arm to laser rod 11. An amplitude noise suppression etalon 52 can be placed in the first arm between mirror 56 and laser rod 11. An illustrative beam profile within the folded cavity 54 is shown graphically in FIG. 6. A first beam waist 60 is produced in the first arm and a second beam waist 62 is formed in the second arm with the profile extending between mirror surface 39 and mirror 58 with an intermediate point 64 at mirror 56. As previously described the beam width at laser rod 11 is matched to the laser diode pumping volume. Doubler 16 is placed at waist 62 while etalon 52 is placed at waist 60. Typical dimensions of the folded cavity are a total length of about 100-130 mm; the radius of curvature of mirrors 56, 58 is typically 37 mm; beam waist 60, 62 are typically less than 100 microns.

The primary cause of multi-longitudinal mode operation in a Nd:YAG laser is spatial hole burning in the active medium. Several techniques exist for eliminating spatial hole burning, including utilizing a ring laser cavity geometry or placing the active medium between quarter wave plates, which are shown in W. Koechner, *Solid State Laser Engineering*, (Springer-Verlag, New York, 1976), p. 226. Either of these techniques can be applied to the intra-cavity doubled laser system described herein, instead of using an etalon, and form additional aspects of the invention. By eliminating spatial hole burning the laser will lase with a single longitudinal mode and thus not suffer the mode instability and amplitude fluctuations described above. Utilizing a ring laser cavity geometry or a pair of quarter wave plates has the advantage that little power is lost when these elements are inserted in the cavity whereas using etalons to force single mode operation often results in a factor of two loss in power.

As previously described, in order to utilize the intra-cavity frequency doubler to generate a frequency doubled laser output, the output of the laser rod must be polarized to coincide with the proper axis of the dou-

bler crystal. When a non-birefringent material such as YAG (yttrium aluminum garnet $Y_3Al_5O_{12}$) used for the laser rod, a polarization means within the cavity is required, as previously shown. However, it is also possible to utilize a birefringent material for the laser rod; the output of the birefringent laser rod will then be polarized, without the need for polarization means, and the laser rod and doubler crystal can be properly aligned for effective frequency conversion. One suitable birefringent material for the laser rod is YLF (yttrium lithium fluoride $YLiF_4$); accordingly, Nd:YLF is also a preferred material for the invention, in addition to Nd:YAG. Other non-birefringent materials such as Nd:YAP (yttrium aluminum phosphate) and birefringent materials such as Nd:YALO can also be utilized. Additional neodymium doped or other rare earth doped solid state materials may also be utilized as long as the lasing ion has an absorption range which matches the laser diode output. The present invention encompasses the use of these alternative materials, both non-birefringent and birefringent, in a manner similar to that described with reference to Nd:YAG, without the polarization means for birefringent materials, to produce a family of miniaturized, laser diode pumped, intra-cavity frequency doubled and non-frequency doubled solid state lasers.

In some applications, pulsed laser outputs are desired. The lasers are previously described generally operate in continuous (Cw) mode. Although it may be possible to produce a pulsed laser output by pulsing the laser diodes which pump the laser rod, the preferred method of producing pulsed output is by Q-switching. As shown in FIGS. 1 and 2D, a Q-switch 66, typically an acousto-optic or electro-optic device, is positioned in the laser cavity. A Q-switch driver 68 is operatively connected to the Q-switch 66. In operation, the Q-switch turns the laser off to allow a population inversion to build up as the laser rod is pumped by the laser diode. The Q-switch is then turned off, producing a high energy pulse as all the stored energy in the laser cavity is released in a short time. The pulse width is determined by the Q-switching frequency. For pulsed operation YLF may be the preferred material since it stores more energy (about double) than YAG. Amplitude noise is not a problem for pulsed operation. Both frequency doubled and frequency undoubled lasers can be pulsed. As an example, a laser producing 80-100 mW IR can be frequency doubled and Q-switched to produce 50 mW average power at 100 kHz green pulses.

Changes and modifications in the specifically described embodiments can be carried out without departing from the scope of the invention which is intended to be limited only by the scope of the appended claims.

We claim:

1. A high-efficiency, laser diode pumped array, frequency doubled, compact solid state laser, comprising: a rare earth doped birefringent solid laser rod selected from the group consisting of Nd:YLF, Nd:YALO having a front end and a back end, the rod producing a polarized output beam;
a housing with means holding the laser rod in fixed position in the housing with its front end forward;
a laser array having a predetermined wavelength pumping the laser rod, having an output frequency sufficiently matched to said laser rod to pump said laser rod, secured in the housing behind and in optical alignment with the rod;

laser cavity means defining a laser cavity mounted in the housing with the laser rod positioned within the cavity, the laser cavity means further including within the cavity an output coupler means;

a frequency doubler, positioned to receive a suitably polarized output beam from said laser rod and to halve its wavelength and double its frequency;

a polarization means for polarizing the output beam of the laser rod and substantially maintaining a polarization which optimizes frequency doubling at the frequency doubler and

means for matching a focused image of the laser diode with a lasing volume of the laser cavity.

2. The laser of claim 1 wherein the laser rod is made of a non-birefringent material, Nd:YAP.

3. The laser of claim 1 wherein the cavity means comprises a mirrored surface forming a front end of the cavity and a rear mirror means forming a back end of the cavity, the mirrored surface forming the front end being highly reflective at the undoubled frequency and highly transmissive at the doubled frequency to provide the output coupling means.

4. The laser of claim 3 wherein the rear mirror means comprises a mirrored surface on the back end of the laser rod.

5. The laser of claim 1 further including beam shaping means associated with the laser cavity for shaping the beam and forming a beam waist in front of the rod, the frequency doubler being positioned substantially at the waist.

6. The laser of claim 5 wherein the beam shaping means comprises a convex front end surface on the laser rod having a focussing effect on the beam, and a convex mirrored surface forming a front end of the cavity and providing output coupler means, the radii of the convex and concave surfaces and spacing therebetween being such that the lasing volume of the beam in the rod is substantially matched to the pumping volume of the laser diode, and a beam waist of minimum size is formed.

7. The laser of claim 1 further including an amplitude noise suppression etalon positioned within the cavity.

8. The laser of claim 5 further including an amplitude noise suppression etalon positioned substantially at the beam waist and adjacent to the frequency doubler.

9. The laser of claim 1 wherein the cavity means comprises a folded cavity comprising:

a rear mirror means forming a back end of the cavity;

a folding mirror which forms with the rear mirror means a first arm of the laser cavity;

an end mirror which forms with the folding mirror a second arm of the laser cavity.

10. The laser of claim 9 further including beam shaping means associated with the laser cavity for shaping the beam and forming a first beam waist in the first arm and a second beam waist in the second arm of the cavity.

11. The laser of claim 10 wherein the frequency doubler is positioned substantially at the second waist.

12. The laser of claim 11 further including an amplitude noise suppression etalon positioned substantially at the first waist.

13. The laser of claim 10 wherein the beam shaping means comprises a convex front end surface on the laser rod, a concave folding mirror and a concave end mirror, the radii of the mirrors and convex surface and the spacings therebetween being such that the lasing volume of the beam in the rod is substantially matched to

11

the pumping volume of the laser diode, and that beam waists of minimum size are formed.

14. The laser of claim 9 wherein the folding mirror is dichroic and forms the output coupler means.

15. The laser of claim 1 further including a Q-switch 5 operatively associated with the cavity to produce a pulsed output.

12

16. The laser of claim 15 wherein the Q-switch is an acousto-optic or electro-optic device.

17. A method for reducing or eliminating amplitude noise in the output beam of a laser diode pumped neodymium doped solid laser, comprising positioning an amplitude noise suppression etalon in the laser cavity.
* * * * *

10

15

20

25

30

35

40

45

50

55

60

65